

FALINGE PARK HIGH SCHOOL

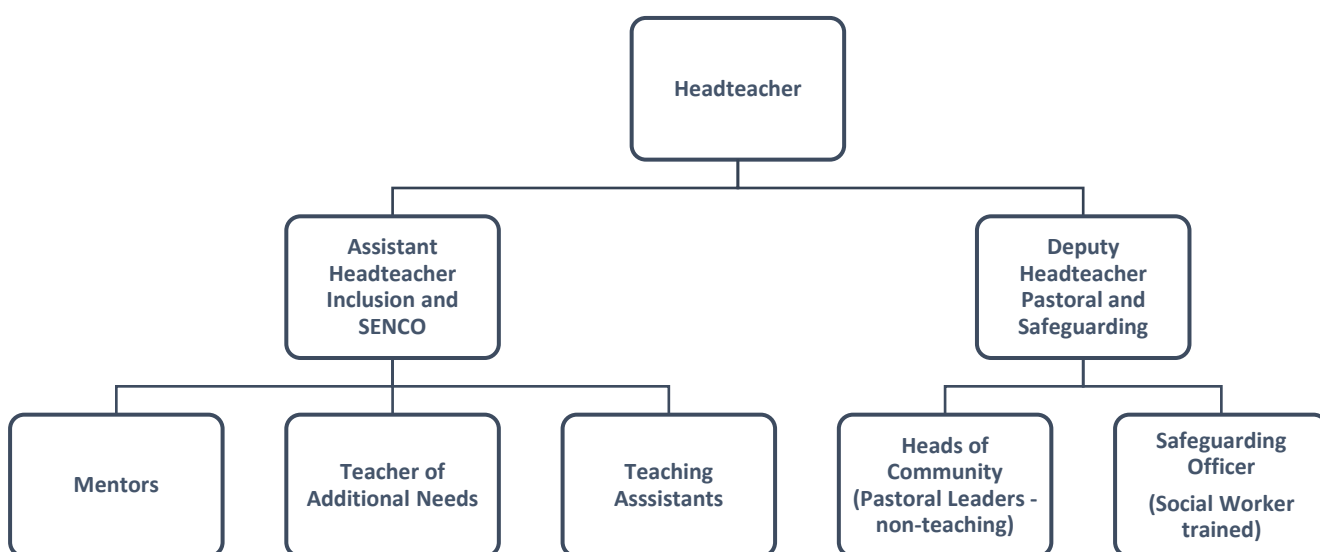
Opening doors; unlocking potential

TEACHER of ADDITIONAL NEEDS

Job start – September 2017

Date of Taking up Post: _____

Organisation Chart



Job Purpose

- **To create a compelling learning experience for pupils within the school nurture room – The Key.**
- **To actively commit to the school strategy of believing in people (professional learning and research) and positive relationships.**

Principal Accountabilities/Performance Standards

The successful applicant will be required to:

1. Perform the teaching and professional duties laid down in the 'Teachers' Pay and Conditions' document.
2. Work with the Mentors and the wider SEN and pastoral team on providing appropriate learning for those children who spend time within The Key.
3. Support and teach pupils on personalised timetables with SEN and other additional needs across a wide range of subjects.
4. Support Managed Move pupils on their integration into the school through individual learning plans within The Key.
5. Support pupils with repeat Fixed Term Exclusions on their reintegration into the school through intervention within The Key.
6. Advise the leadership team on non-accredited courses such as ASDAN, Princes Trust and devise a curriculum which suits the needs of specific groups of pupils.
7. Teach small groups of pupils on non-accredited courses which enable them to access the wider curriculum.
8. Collaborate and liaise with subject teachers to ensure pupils working within The Key do not miss out on learning.
9. Support the curriculum through the delivery of literacy and numeracy.
10. The ability to converse at ease with customers and service users and provide advice in accurate spoken English

Additional Information

You are employed in the capacity of a teacher subject to, and with the benefits of, the conditions of employment set out, or referred to, in your letter of appointment and statement of particulars.

This Job Description identifies the responsibilities attached to your post. It is subject to the limits on working time set out in the current Teacher's Pay and Conditions document.

This Job Description is subject to amendment from time to time within the terms of your conditions of employment, as the needs of the school/service may require, but only to an extent consistent with those conditions of employment and only after consultation with you. The agreed Grievance Procedures may be invoked in any dispute arising from this job description or subsequent amendment, in which case teachers are advised to consult their Professional Association.

The school is committed to safeguarding and promoting the welfare of children and young people and expects all staff and volunteers to share this commitment. Successful candidates will undergo an enhanced DBS check, checks of references and employment history.

Signatories:

(Both Headteacher and postholder are asked to sign and date this Job Description following consultation on its contents).

Signed: _____
(Post Holder)

Date: _____

Signed: _____
(Headteacher)

Date: _____

FALINGE PARK HIGH SCHOOL

Teacher of Additional Needs – Person Specification

ATTRIBUTES	ESSENTIAL	DESIRABLE	HOW IDENTIFIED
WORK RELATED EXPERIENCE AND SKILLS	<ul style="list-style-type: none"> • A commitment to and an awareness of the issues involved in promoting equality of opportunity and social inclusion in all aspects of school life. • Good social skills and the willingness to be involved in all aspects of school life. • A positive and proactive approach to teaching. • Hard working. • Good communication skills written and verbal. • Experience of working as a Form Tutor • The ability to converse at ease with customers and service users and provide advice in accurate spoken English 	<ul style="list-style-type: none"> • Willingness to undertake and make a positive contribution to extra-curricular activities 	Application Form/Letter Interview/Lesson Observation/References
QUALIFICATIONS	<ul style="list-style-type: none"> • Degree • Qualified Teacher Status 	<ul style="list-style-type: none"> • Qualification within area of SEN • Accredited qualifications i.e. ASDAN, Princes Trust. 	Application Form Qualifications
SPECIALIST SKILLS AND KNOWLEDGE	<ul style="list-style-type: none"> • Experience of teaching children with SEN and additional needs • Experience of teaching children with challenging behaviours. 	<ul style="list-style-type: none"> • Experience of working in a multi-cultural school. 	Application Form/Letter Interview/Lesson Observation/ References