

Working for Salford

I have high standards

I aim to get it right first time

I use my knowledge, expertise and judgement

I challenge the status quo

I take pride in my work and myself

I'm an ambassador for Salford

I take ownership of what I do

I share success

I'm committed to our city and our services

I'm a professional and make a good impression

What do you
PRIDE
yourself in?

Salford City Council

Quotes were provided by our employees #OurValues

Spirit of Salford

I like to praise others and celebrate their achievements

I value good relationships with people

I put residents at the heart of what I do

I'm flexible in my approach

I support others

I work with others to make things better for our city

I respect diversity

I'm considerate of others

I do things with people not to them

How do you value
PEOPLE?

Salford City Council

Quotes were provided by our employees #OurValues

Spirit of Salford

I don't give up

I'm motivated to change things about our city

I'm innovative and embrace new ideas

I embrace the Spirit of Salford

I care about making a difference

I'm ambitious about my work

I'm positive about Salford

I come up with ways to make things better

I'm optimistic about our city, its people and my work

What sparks your
PASSION?

Salford City Council

Quotes were provided by our employees #OurValues

Spirit of Salford

I'm honest, open and reliable

I'm efficient and I share best practice

I use resources wisely

I deal with difficult situations

I look at the bigger picture

I learn from mistakes

I have a 'can do' attitude and go the extra mile

I look to make improvements

I make it happen

How do you take
PERSONAL RESPONSIBILITY?

Salford City Council

Quotes were provided by our employees #OurValues

Spirit of Salford



A Message From Jim Chief Executive



Salford as a city has changed dramatically in recent years and now is Salford's time!

Salford is growing and it's an exciting time to join us. More people than ever are choosing Salford as a place to live, work, invest and visit and we really are transforming into a modern, global city. Unprecedented private and public investment over the last ten years, including internationally recognised regeneration around MediaCityUK, has transformed Salford from its post-industrial roots. Salford's economy is growing well above regional and national averages and is outperforming both London and Manchester to become the UK's hot spot for new business in distinct sectors, with a digital and creative hub.

We know that we will have 40,000 new jobs and 40,000 new homes by 2040 and we already have one of the youngest and fastest growing populations in Greater Manchester. Salford is the home of MediaCityUK and the BBC and also the site of the 5th National RHS garden, Bridgewater. With a developing strong cultural and visitor offer, a rich heritage, waterside attractions and huge swathes of beautiful green spaces, the city truly has an impressive offer.

Here at Salford we are people focussed and values based. Our people are at the heart of delivering the Council's priorities for the city. I'm passionate about putting our people first and giving all colleagues the skills and support they need to develop and succeed within our values based, diverse and inclusive organisation.

The Spirit of Salford is tangible and our values of pride, passion, people and personal responsibility capture this spirit and expectations of the city and they inform the way we operate. These values also underpin our leadership framework which sets out the skills and behaviours required of our leaders in Salford.

Here you'll find an overview of what we offer as an organisation in recognition of the brilliant work our people do and for their commitment to our city and it's people.

Jim

Our Vision and Priorities



Although every day is different we all come to work for the same thing, to achieve our vision ‘to create a better and fairer Salford and provide the best possible quality of life for the people of the city.’

Our City Mayor has set out this vision with a clear set of priorities called the ‘Great Eight’. Whatever role we have, we’re all here to make that vision a reality. This vision gives our people direction and a shared sense of purpose.

Salford is a place for everyone to thrive – a place where everyone cares and everyone counts.

We have eight priorities.

#TeamSalford

Salford City Council



Creating a **better** and **fairer**
Salford with the **Great Eight**

Our Values And The Spirit Of Salford

Here at Salford we are people focussed and values based. The Spirit of Salford is tangible and our values of pride, passion, people and personal responsibility capture this spirit and expectations of the city and they inform the way we operate. They influence our choices, behaviours and how we make decisions and transform services.

Living the values day in and day out creates a supportive environment which allows us 'to be the best we can be' and achieve our vision.

The Spirit of Salford represents our culture, our social conscience and pride – our organisation is about people and the communities that we serve.

We are renowned for our resilience and coping positively with change, we make the most of opportunities.



We live and breathe our values in everything we do.

Our annual employee awards recognise our people for living our values day in and day out, we also recognise our manager, team and employee of the year.

We also recognise our colleagues who've been with us for 25 years.

#OurValues

**PRIDE • PASSION • PEOPLE
PERSONAL RESPONSIBILITY**

Our Commitment

Our people are at the heart of delivering our vision for 'a better and fairer Salford for all'.

Salford is a place for everyone to thrive – a place where everyone cares and everyone counts and we are committed to creating 'a great place to work'.

Diversity and Inclusion



Every person is different but equal, and everyone's unique talent should be recognised and encouraged.

We are committed to developing a culture which respects individuals, appreciates difference and allows everyone regardless of background to reach their full potential.

We work closely with our established employee network groups (BME, Equal in Salford and LGBT) to make positive changes. We are proud to be an accredited disability confident employer and we are working with Stonewall, Europe's largest, lesbian, gay, bi and trans charity to create a truly inclusive workplace.

We are also prioritising engagement with our working carers and are in the process of setting up a carers network and piloting a carers passport to support our employees to balance work and caring responsibilities.

We have also committed to the Greater Manchester Workforce Race Equality Standard which is a collaboration of public sector employers across the Greater Manchester working together to tackle race inequality in the workplace.

Pay And Living Wage

At Salford, we believe in paying a fair wage, not a minimum wage. That's why we were the first council in Greater Manchester to pay the full foundation living wage and to be accredited as a foundation living wage employer.

Jobs are graded based on the requirements of the role. Each grade has a number of levels which you will move up each April until you reach the top.



Pension – Secure, flexible and tax efficient

When you join you will be enrolled into the Local Government Pension scheme, some people will be eligible for different schemes. This has some great benefits including tax relief on the contributions you pay, the option to exchange part of your pension for a tax free cash lump sum, and immediate valuable lump sum life cover. The amount you contribute depends on how much you are paid. For more information go to the Greater Manchester Pension Fund: www.gmpf.org.uk/cost/paybands

Flexible Working



We have lots of different types of job at Salford – some require fixed start and finish times, some with different shift patterns to cover 24/7 services and some where there is more flexibility in how you work.

We offer flexible working depending on the role that you do, we understand the importance of flexing to meet the needs of our people who can't work a traditional nine to five. We are happy to talk flexible working with you and support you where we can.

We know how hard it is to juggle caring for a loved one with work so we aim to provide support and flexibility to balance caring responsibilities with work.

[My]Work...

Being smarter in how we work.

With the introduction of our [My]Work programme we are working 'to empower and enable our people to be smarter in how we work whilst maintaining a healthy work life balance'.

How we work is changing with a shift from traditional office based working, work is no longer just somewhere we go, it's about what we do, what we achieve and the outcomes we deliver. We want to be able to provide quicker, easier and better services to our residents and support our people to be efficient, productive and effective in their role.



Leave

Up to 33 Days Holidays

Working here you'll get up to 33 days holiday a year (plus bank holidays).

You can carry annual leave forward from one year to the next, or alternatively you can bank up to five days a year from your entitlement so you can save your holidays for that extra special trip.

Leave Plus

You can also buy additional leave and spread the costs throughout the financial year.

Family-related Or Emergency Leave

To support you to deal with family related matters or emergencies we offer a whole range of support such as parental leave, maternity leave, paternity leave, adoption leave, carers leave and special leave.

Going Green

As an environmentally responsible organisation we are a bronze carbon literate organisation and, through our carbon management programme, have made an overall CO2 reduction in our operations of 42% (2007-2017). We encourage all of our people to make green travel choices and are striving to transition all of our business travel over to sustainable travel options.



Get On Your Bike

At Salford, we want to do what we can to help reduce pollution. We also want our workforce to be happy and healthy. That's why we encourage cycling to work. You can use our salary sacrifice, cycle to work scheme to choose a bike from one of over 2,000 retailers nationwide, making big savings on the original cost. We have showers and drying cabinets for your clothes, lockers and covered bike racks.



New Wheels

The council has teamed up with Tusker who offer new cars in exchange for some of your salary. The way it works is similar to the Cycle to Work scheme where employees swap some of their salary in return for being given the keys to a new car. It's a great way for anyone to afford and run a new car and save some money at the same time. The car benefit scheme is all inclusive – the monthly amount you pay includes replacement tyres, car insurance, servicing, MOT, road tax, repair bills and breakdown cover, so there's absolutely nothing for you to worry about, other than adding fuel.

Car Club

Rather than using your own vehicle to travel on council business, you'll be automatically registered to join our car club scheme.

We have a fleet of low-emission cars through Co-Wheels, a community interest company. Cars can be booked online or through a smartphone and each has a fuel card, so you just get in and drive. You automatically become a Co-Wheels member for personal use as well as business use, so you can take advantage of some really cheap car hire rates over the weekend or in the evening. Cars are available across Salford so there should always be one near you. Just hire it when you need it and return it when you're done.

Learning and Development

We believe that learning and development is really important so we offer opportunities from as soon as you start your journey with us to support you to learn, grow and develop. Talk to your manager to create your own personal development plan.



If you are joining us in a leadership role we will support you to develop the skills, knowledge, and confidence to lead highly committed, motivated teams and be a values based leader.

We understand how important continuous leadership development is, as soon as you join us you will work with your manager who will support you to create a development plan which will enable you to succeed.

#LeadingSalford

In Salford we want all individuals and teams to benefit from excellent leadership. This is where our leadership behaviours and our #Leading Salford development programme comes into play. The framework sets out what great leadership looks like in Salford and the learning you can access to develop the skills and behaviours to successfully lead our people.

When you join us you will be supported to attend:

- Our **management essentials** programme to help you develop the practical knowledge you will need to lead in our organisation, understand how we do things and help with the 'I don't know, what I don't know' feeling when you first start.
- The **#LeadingSalford** leadership development programme which is based on our leadership behaviours. The four master classes will help you develop the skills, knowledge, and confidence to meet the expectations that we have of our Salford leaders.

Leadership Qualification

You will also be offered the opportunity to gain a relevant leadership qualification (at either level 3, 5, 6 or 7). This qualification will be delivered through an apprenticeship programme.

Apprenticeships have changed a great deal over recent years they're now for people of any age and at any stage of their career who want to further develop their skills and knowledge and gain a qualification which go all the way up to postgraduate level.

Learning and Development



Your Development

We don't believe in traditional annual appraisals – instead we have something called a PDR (Professional Development Review) to help you and your manager to talk about you, your achievements, your challenges, and most importantly, your future career aspirations and development needs.

This isn't a one off it's part of a continuing conversation with your manager. We place equal value on how our people behave as well as technical ability this discussion is also about making sure that how you approach your work aligns with our values of Pride, Passion, People and Personal Responsibility.

Apprenticeships

Apprenticeships have changed a great deal over recent years they're now for people of any age and at any stage of their career who want to further develop their skills and knowledge and gain a qualification! These qualifications go all the way up to postgraduate qualifications.

An apprenticeship is a work-based learning programme which enables you to develop the valuable skills, knowledge and behaviours you need for a specific job role and to progress in your chosen career.

E-Learning

Our Me Learning e-learning site contains over 180 topics, which are available to all Salford City Council employees. It is easy to use and you can access it anytime, anywhere; you can even complete it at home if you wish! The site also contains resources such as user guides and information sheets on a wider range of topics.

Volunteering

24 Hours to Make a Difference is our employer supported volunteering scheme which allows our people to take up to 24 hours out of work time to give something back to Salford through volunteering. You can take up to 24 hours paid time off during your normal working week to volunteer.

Our commitment is to increase volunteering in Salford, give you the opportunity to inspire, be inspired and learn, grow and develop as a result.



#Digital Salford



Salford is aiming to become a Digital City, an ambition which forms part of our wider vision for a better, fairer Salford to improve resident's lives.

We are strongly committed to digital inclusion - making sure that residents have the capability to use the internet to do things that benefit them day to day.

We have developed various innovative initiatives to ensure everyone gets the most out of digital technology, one of which is Digital You, an ambitious plan to get almost 8,000 of the most vulnerable and digitally excluded residents online by 2020.

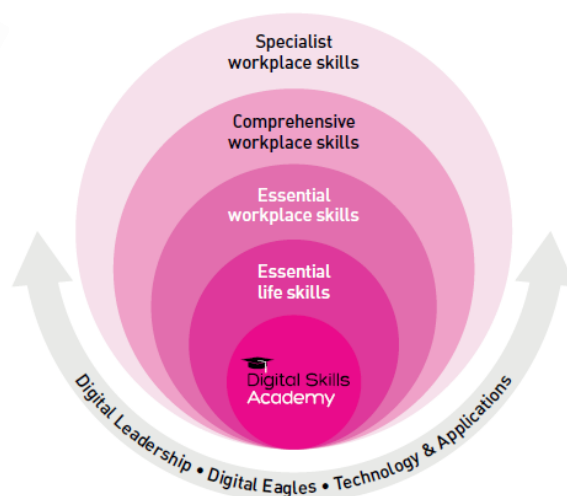
We also want to ensure that we have a digitally inclusive workplace where all of our people have the skills and capabilities to thrive. In partnership with Barclays Bank, we are supporting a good cross section of our workforce to become Salford Digital Eagles to help fellow colleagues and residents become comfortable and confident operating online.

This approach has established itself as one of the most successful mechanisms to grow digital skills capabilities across the organisation. Over 300 active Eagles are blazing a trail to support their colleagues and residents to become comfortable and confident online.

The Eagle role has constantly evolved and we are now aligning our Digital Eagles programme and our Eagles as a key enabler to support our new Digital Skills Academy.

Digital Skills Academy

The Academy is bringing key partners and digital programmes together to develop a digital skills development pathway for our whole workforce to develop their essential workplace digital skills and then move beyond this to develop more comprehensive workplace skills.



Your Voice

Trade Unions

We recognise and positively support the principles of collective engagement, consultation and bargaining and promote trade union membership. We believe that a truly representative and effective trade union relationship supports employee engagement and enhances workforce employee relations. We enjoy a positive & constructive working relationship with the recognised trade unions, in which all parties are committed to working together and our trade union stewards are also part of our Salford 100!

There is an established framework within which council officers and trade unions can make a positive contribution and establish good working relationships to support good employee relations, encourage workforce development and facilitate local resolution of potential disagreements. Trade union support is also available to individual members including representation as required.

Our approach to change is built around the principles of co-design with our people and our local stewards are encouraged to be actively involved throughout all stages from planning through to implementation.

The council works with the trade unions on collective matters via a joint secretary arrangement; the current joint trade union side secretary is the UNISON branch secretary.



Unison.org.uk

Tel: 0161 794 7425



gmb.org.uk

Tel: 0161 925 1359



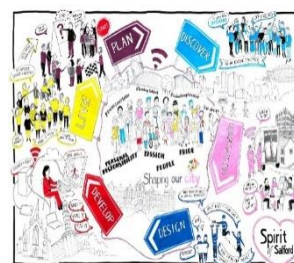
unitetheunion.org

0161 925 1359

Salford 100

As an organisation we foster a spirit of trust, empowerment, openness and co-operation with all of our employees putting people at the heart of everything we do. We aim to give a voice to and listen to our people by effectively communicating and engaging with all of our employees.

The Salford 100 is a key element of our approach to employee engagement with the purpose of providing a platform to engage employees in early and creative dialogue to co-design workforce initiatives to make Salford an even greater place to work. An approach that reflects our organisational approach to co-design.



Salford 100
Get involved to make Salford a great place to work



Wellbeing is really important to us and we strive to support the health and wellbeing of our people, by:

- Creating an environment which promotes positive physical and mental health in the workplace
- Encouraging and supporting people to develop a healthy lifestyle
- Supporting people with manageable physical and mental health conditions or disabilities to maintain access to and to return to work
- Creating a management culture of openness and communication, which actively engages with the workforce, especially during periods of change.

Keeping Active

We offer reduced membership at Salford Community Leisure centres. With our partners we organise hundreds of events, activities and benefits for you every year.

Your Health

Free Physio - You can access free physiotherapy sessions through our occupational health service.

Free Counselling - We offer free confidential counselling services so you always have someone to talk to if you need to.

Hospital Appointments and Cancer Screening - We offer up to two hours' time off for hospital appointments and in addition we support you with time off if you need to attend for cancer screening.

Disability leave - We offer additional leave to support people who have a disability or long term health condition who may need some time for treatment or rehabilitation or may just need a period off work to adjust to a change in personal and professional circumstances.

We run a number of events such as free guided walks, support national focus weeks and provide advice online always focussing on your health and wellbeing supporting you to move more, talk more and live well.